

# Integrated Configuration Tool Installation Sheet

## Introduction

This document is designed to assist experienced personnel in quickly configuring the PXNplus, DirecDoor, and ACUXLplus controllers using the Integrated Configuration Tool. For more detailed information, refer to the applicable controller installation manual.

We recommend that you configure the PXNplus, DirecDoor, and ACUXLplus controllers *prior* to installing them at the site.

## Before you begin

One of the following Internet browsers is required:

- Microsoft Internet Explorer 6.0 or later
- Netscape 7.0 or later
- Mozilla Firefox 5.0 or later

Answer these questions before continuing:

**Is there a firewall on the computer you are using to access the Integrated Configuration Tool?** If so, you will need to disable it in order to use the Integrated Configuration Tool.

**Is your network using a proxy?** If so, you will need to disable the proxy or bypass it.

Note the following details about saving changes in the Integrated Configuration Tool:

- If you change any options on an Integrated Configuration Tool form, you must click the **Save** button (see Figure 48) to save your changes before switching to another form. This action saves your latest changes to a temporary file.
- Select Apply Changes from the Administration menu after you have made all necessary changes in the Integrated Configuration Tool. You will be prompted to restart either the application or the controller and changes will be saved to the controller's config file.
- If you click **Save** on each form, you do not need to apply changes or restart the application until you are finished making all necessary changes.

## First-time configuration

By default, the controller's IP address is 192.168.6.6. To have your computer communicate with the controller, connect your computer to the network connector on the controller using a network hub or crossover cable.

Use the Windows Control Panel to set the IP address to 192.168.6.5, or other valid IP address (192.168.6.x where x is any number between 1 and 254, except 6).

- PXNplus and ACUXLplus: network connector J1
- DirecDoor: network connector J10

## Using the Integrated Configuration Tool

**To start the Integrated Configuration Tool:**

1. Connect the computer to the network connector on the controller using a network hub or Cat 5 crossover cable.
2. Open your Web browser, and then enter the IP address of the controller in the browser Address field.
3. Enter your username and password on the password page. The default values for both the username and password are `install`, `install`.

---

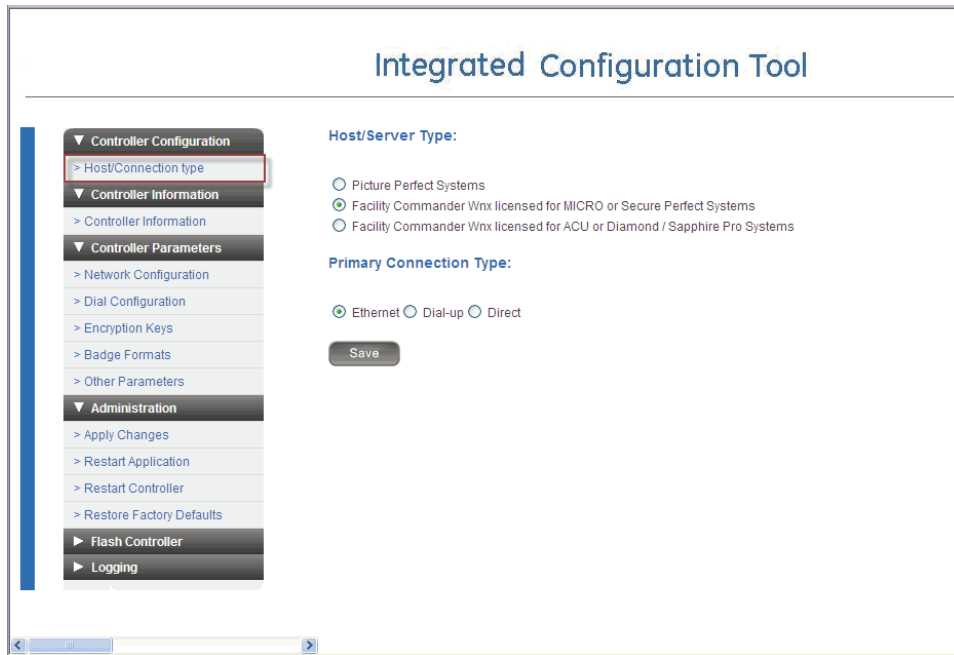
**Note:** We recommend that you change the default username and password values for added security.

---

4. The Integrated Configuration Tool main page opens as shown in Figure 1.



**Figure 1. Integrated Configuration Tool main screen**



**Table 1: Integrated Configuration Tool options**

Site Map	Purpose	Usage
Save	To save changes prior to applying them	Appears on each page. The user must save changes made on each page prior to going to another page. This allows multiple configuration pages to be updated. After saving, the user must apply changes to write them to configuration file. Application and/ or Controller must be restarted to have changes take effect.  <b>Note:</b> You do not need to apply changes or restart the application until all changes on all pages have been made.
<b>Controller Configuration</b>		
Host/Connection Type	Select the host application and communications method to be utilized	Must be configured. Brief instructions are supplied in this Installation Sheet. Refer to the applicable controller installation manual.
<b>Controller Information</b>		
Controller Information	Set controller address View current firmware versions	You must enter an address on Secure Perfect /Facility Commander Wnx based controllers, ACUXLplus controllers, and Picture Perfect Dialup controllers. Brief instructions are supplied in this Installation Sheet. Refer to the applicable controller installation manual.
<b>Controller Parameters</b>		
Network Configuration	Set Network Parameters: Static or DHCP/DDNS	Must be configured. Brief instructions are supplied in this Installation Sheet. Refer to the applicable controller installation manual.
Dial Configuration	Set Dialup Parameters	Only if dialup is needed. Refer to the applicable controller installation manual.
Encryption Keys	Set DES Keys	Only if DES or AES is used. Refer to the applicable controller installation manual.
Badge Formats	Set Custom Badge Formats	Only if Custom Badge Formats are used. Refer to the applicable controller installation manual.
Other Parameters	Set Custom Parameters	Only if Custom Parameters are used. Refer to the applicable controller installation manual.

Site Map	Purpose	Usage
<b>Administration</b>		
Apply Changes	To write saved changes to primary config file	Used when making changes to the configuration of the controller. Changes only become active after Restart Application is accomplished.
Restart Application	Shuts down application and restarts it Causes the config file to be read at startup Makes applied changes active	Used when finalizing changes to the configuration of the controller.
Restart Controller	Shuts down the controller and restarts it	Only to be used to reboot the controller when enabling and disabling the Integrated Configuration Tool and after flashing the controller using the tool.
Restore Factory Defaults	Restores the board to factory defaults	Used to restore factory defaults. Everything except the IP address of the controller is restored to default.
<b>Flash Controller</b>		
Flash Controller	To update firmware in controller	Follow update instructions that accompany firmware.
<b>Logging</b>		
Log Control Parameters	Turn on or off Diagnostics on different parts of the controller	Refer to the applicable controller installation manual.
View Log File	View previously generated log files	Refer to the applicable controller installation manual.
Save Log File	Transfer log files to computer	Refer to the applicable controller installation manual.
Print Log File	Print the log files	Refer to the applicable controller installation manual.
Save Log File	Clear the log files	Refer to the applicable controller installation manual.

**Note:** If Facility Commander Wnx is configured as the host type on the Host/Connection type form and the PXNplus board has a dual NIC installed, the Network Configuration form will have Primary Network and Secondary Network tabs at the top of the form. Select a tab to switch from one network to another.

#### To configure the controller information:

1. On the Controller Configuration menu, select Host/Connection type.
2. In the Host/Server Type field, select the software package you are using.
3. In the Primary Connection Type field, select Ethernet.
4. Click **Save**.

#### To set the controller's address:

**Note:** If this is a Picture Perfect network controller only (dial-up or dial fallback is *not* used), then you do not need to set the controller address.

1. On the Controller Information menu, select Controller Information.
2. Enter the address number in the Controller Address field.
3. Click **Save**.

#### To configure the controller network settings:

1. On the Controller Parameters menu, select Network Configuration.
2. On the Controller Information area, set the controller name (DHCP) or address (static), as described next.

**To use a dynamic controller IP address,** select Use DHCP, and then name the controller by either:

- Entering a qualified, unique domain name as the Controller Name (Example: micro.test.utc.com), or
- Checking the Use MAC Address check box to automatically generate the controller name from the Controller MAC address. (This option disables the Controller name field.)

#### To use a static controller IP address:

- Enter the IP address of the controller given to you by your network administrator in the Controller IP field.
- If using a gateway, you can either accept the gateway IP that is generated based on the controller IP or enter a gateway IP address in the Gateway IP field.
- If you are using a subnet mask, you may accept the subnet mask generated based on the controller IP or you may enter a subnet mask in the Subnet field.

3. If you are using Secure Perfect or Facility Commander Wnx and you do not want to use DNS, skip to Step 4. If you are using Picture Perfect, you must set the host name (DNS) or address (static). Refer to the appropriate section that follows.

**DNS:**

- (Picture Perfect only) For a dynamic host IP address, check the Use DNS check box and enter the host name in the Host Name field.

**Note:** Due to limitations of the Picture Perfect host, the DNS/DDNS server needs to be manually updated with the Picture Perfect host name and IP address.

- (Picture Perfect only.) Enter the backup host name in the Backup Host Name field.
- If you set up a static IP address in the Network Configuration section, you need to enter the domain for the host in the Domain field and the DNS IP address in the DNS IP field. If DHCP was selected, this is not necessary. Secure Perfect and Facility Commander Wnx require the DNS IP address in the DNS IP field if the DNS check box was checked.

**Static:** (Picture Perfect only.)

- For a static host IP address, enter the IP address in the Host IP field.
- Enter the IP address in the Backup Host IP field.

4. Click **Save**.
5. If you are not using the dial fallback feature, click Apply Changes and then click **Restart Application** to complete your controller configuration. Otherwise, continue with the next procedure.

**To configure the controller dial fallback settings:**

The on-board modem *must* be installed on the PXNplus CPU Board in order to use the dial fallback feature.

1. On the Controller Parameters menu, select Dial configuration.
2. In the Host Phone # 1 field, enter the phone number for the host computer. Use the format: nnn-xxx-xxxx (for example, 561-555-5555).
3. If there is an additional phone number to reach the host, enter it in the Host Phone # 2 field, otherwise, leave the field blank.
4. The Modem Init String and Modem Deinit String fields require values only if you are experiencing difficulties with the optional modem board.
5. Click **Save**.
6. Click Apply Changes and then click **Restart Application** to complete your controller configuration.

## Technical Support

For assistance with this product, refer to this document and any other documentation provided. If you still have questions, you may contact technical support during normal business hours (Monday through Friday, excluding holidays, between 8 a.m. and 7 p.m. Eastern Time).

Web site: [www.utcfireandsecurity.com](http://www.utcfireandsecurity.com)

Phone: 1-888-437-3287

Fax: 561-998-6224

Email: [rs-bctsupport@fs.utc.com](mailto:rs-bctsupport@fs.utc.com)

### UTC Fire & Security

#### North America

888-437-3287

#### Asia

T 852-2907-8108

F 852-2142-5063

#### Australia

T 61-3-9239-1200

F 61-3-9239-1299

#### Canada

T 800-267-6317

F 613-737-5517

#### Europe

T 32-2-725-11-20

F 32-2-721-40-47

#### Latin America

T 561-998-6100

F 561-994-6572